



# Autoclaves

# Reliable Sterilization Partner Sturdy

**F**rom the establishment in 1992, Sturdy has been dedicated to bring our clients the most advanced products. With the mission to be your reliable sterilization partner, Sturdy isn't only committed to the development of progressive technology, but also possesses all the requisite certifications. ISO 13485, CE certificates and Taiwan GMP are for quality management control approval and guarantee the safety of our products.

Always aiming for greater achievement to next era, we hope our spirit can be transmitted to the users and thus, to have a connection with all our users. Our new logo represents stable and warm, symbolize full of energy and provide reliable sterilization environment. The design style is simplicity and easy-read, which is to show professional in medical field. The new slogan "Reliable Sterilization Partner" represents Sturdy being your good partner for high quality goods and to meet Safety Standard, meanwhile the distributors provide users with reliable products.

With the vast experience and dedication, Sturdy is your best choice of high quality and innovative equipments.

Sturdy's new logo

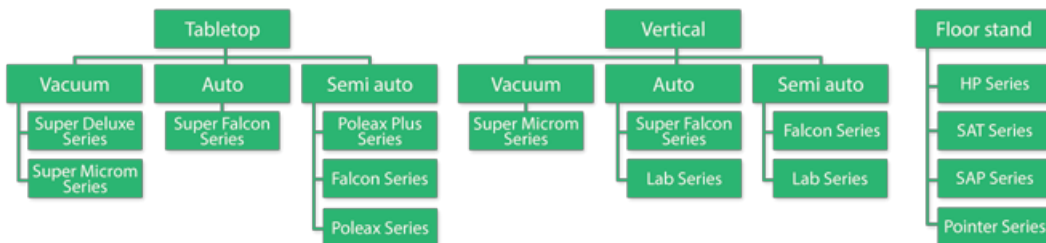
**STURDY**  
APEX GROUP



## Sturdy stands by you

Sturdy Industrial has been supplying the autoclaves with reliable, durable for over 23 years and boasts a complete line-up of products for autoclave application, including hospitals & medical centers, small/medium sized clinics, laboratories & research centers, and non-medical applications (e.g. tattoo parlors, beauty salons). Sturdy Autoclaves are 100% MIT (Made in Taiwan), from design, to development, manufacturing and packing, ensuring that every item is inspected under our Total Quality Control standards to meet and surpass strict ISO and CE regulations.

Our autoclaves are categorized as following:



### Our Features:

- Safety and quality are our first priority
- Reliable customer support – At your service
- Easy operation, user friendly
- CE certified
- EN 13060 for small steam sterilizers
- PED certified chamber
- Accessible and easy maintenance
- Have a need, meet a need



## Super Deluxe Series -Tabletop Vacuum

The Series represents Sturdy's all purpose, top-of-line tabletop autoclave with versatility and flexibility to meet almost any situation that arises. This model uses an LCD panel along with 3 navigation buttons (up/down/return), which allow you to configure almost everything using the screen - this minimizes the buttons on the panel and allows the series more flexibility and functionality.

### Class B

# SA-260MB/SA-300MB/SA-302MB

#### Features:

- Class B
- LCD panel
- Pre & post vacuum
- Prion preset program
- Leakage, Helix, B.D. diagnostics
- Data recorder (SD card) and printer
- Vacuum based tubal sterilization
- Tank can be filled manually or piped-in (filtered water)
- Overheat protection
- Process evaluation system
- Pressure auto door lock
- Emergency stop button
- Pressure overload protection
- Customization program



A. Printer



B. LCD Display

Model	SA-260MB	SA-300MB	SA-302MB
Chamber capacity (Liter)	24	40	50
Sterilization Temp (° C)	121 and 134 or graduated 105 - 135		
Control system	Microprocessor		
Dry time	1 - 60 minutes		
Water Tank (Liter)	4.2	4.2 x 2 tanks	
Life time	7 years		
Options	Liquid		



SA-260MB

B



SA-300MB/SA-302MB

A

Sturdy's advanced tabletop autoclaves for solid, wrapped, tubal and liquid (optional) sterilization. These autoclaves use Microprocessor design, providing smart logic control for precision temperature monitoring and a full range of settings for diagnostics, drying and pre-programmed sterilization presets. The main feature is a powerful vacuum pump for thorough inside-out sterilization of tubal instruments.

# SA-230MA/SA-260MA/SA-300MA

**Features:**

- Pre & post vacuum
- B.D. & Pump test diagnostics
- Prion preset program
- Auto water fill
- Pressure overload protection
- Overheat protection
- Pressure auto door lock
- Emergency/reset buttons
- Pressure safety valve

Model	SA-230MA	SA-260MA	SA-300MA
Class S Model (+ Recorder)	SA-230MA-R	SA-260MA-R	SA-300MA-R
Chamber capacity (Liter)	16	24	40
Sterilization Temp (° C)	121 and 134		
Control system	Microprocessor		
Dry time	0/ 15 / 30 / 35 / 40 minutes		
Life time	7 years		
Options	Flash, Liquid		Liquid



C. Progress indicator



D. Data recorder for MA-R (SD card, USB port)



E. Program selector



SA-300MA



SA-230MA



SA-260MA-R

The autoclaves are engineered with Microprocessor Technology, providing advanced features for more sophisticated chamber sensors, user interfaces and warning and alert systems. They are designed for Wrapped, Solid and optional Liquid sterilization.

The straightforward control panel is especially designed for staff from all types of backgrounds and experience levels, increasing efficiency and minimizing user error, while still providing enough functionality to get the job done.

# SA-230FA/SA-260FA

**Features:**

- Easy Program Selector
- Pressure overload protection
- Overheat protection
- Pressure auto door lock
- Emergency/reset buttons
- Auto water fill

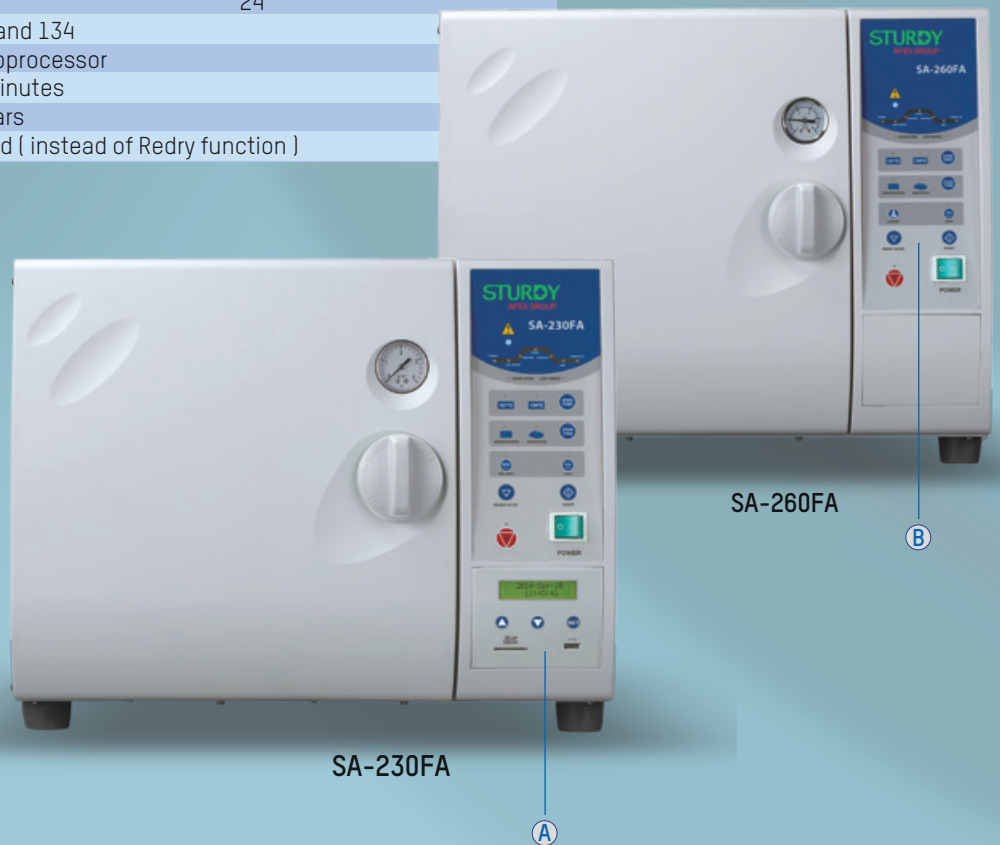
Model	SA-230FA	SA-260FA
Class N Model (+ Recorder)	SA-230FA-R	SA-260FA-R
Chamber capacity (Liter)	16	24
Sterilization Temp (° C)	121 and 134	
Control system	Microprocessor	
Dry time	30 minutes	
Life time	7 years	
Options	Liquid ( instead of Redry function )	



A. Data recorder for FA-R (SD card, USB port)



B. Program selector







The Poleax Plus Series are designed for sterilization of unwrapped materials in hospitals and clinics. They are easy to install – just plug into a power source, add water and start sterilizing. Simple operation and easy maintenance. Comply with EN13060 Class N.

# SA-232N/SA-252N/SA-300N

**Features:**

- Class N
- Digital sterilization cycle recorder (SD & USB)
- Overheat protection
- Pressure overload protection
- Pressure safety valve
- Pressure auto door lock
- Micro switch door lock
- Emergency stop button

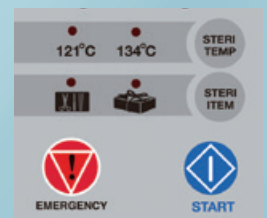
Class N Model	SA-232N	SA-252N	SA-300N
Chamber capacity (Liter)	16	24	40
Sterilization Temp (° C)	121 and 134		
Control system	Microprocessor		
Life time	7 years		



SA-232N/SA-252N



SA-300N



A. •SD card and USB port  
• Progress indicator

B. Program selector



The autoclaves are designed with traditional mechanical engineering for customers who are accustomed to and prefer straightforward, nuts-n-bolts autoclaves with time-tested quality and durability that is both economical and practical.

Control panels are designed with simple controls which make these autoclaves also ideal for non-medical applications, such as tattoo parlors and beauty salons.

# SA-252F/SA-300H

**Features:**

- Graduated sterilization timer
- Mechanical pressure control system
- Pressure overload protection
- Overheat protection
- Pressure auto door lock
- Emergency stop button

Model	SA-252F	SA-300H
Chamber capacity (Liter)	24	40
Sterilization Temp (° C)	118 - 134	
Control system	Mechanical engineering	
Sterilization time	0 - 60 minutes	
Dry time	0 - 60 minutes	
Life time	7 years	
Options	Liquid	



SA-252F



SA-300H



The autoclaves are constructed with both Microprocessor and Traditional Mechanical designs except SA-230. They offer advantages such as power conservation, water conservation and reduced maintenance due to less parts. Control panels are designed with simple controls for basic sterilization tasks.

## SA-230/SA-232/SA-232X/232V

**Features:**

- EZ Control panel
- EZ maintenance
- Overheat protection
- Pressure overload protection
- Door safety latch (SA-232X only)
- Pressure safety valve

Model	SA-230	SA-232	SA-232X	SA-232V
Chamber capacity (Liter)	16	16	16	16
Sterilization Temp (° C)	126	126	118-134	118-134
Control system	Mechanical		Microprocessor	
Life time	7 years			



Vertical autoclaves are suitable for instruments such as flasks, frequently used in Lab and Research centers.

SA-300VMA is designed with microprocessor control to ensure accurate temperature regulation during sterilization. The most main feature is a powerful vacuum pump for thorough inside-out sterilization of tubal instruments.

# SA-300VMA

**Features:**

- Pre & post vacuum
- B.D. & Pump test diagnostics
- Prion preset program
- Auto water fill (piped-in)
- Pressure overload protection
- Overheat protection
- Pressure auto door lock
- Emergency/reset buttons
- Pressure safety valve
- Liquid sterilization program

<b>Model</b>	<b>SA-300VMA</b>
Chamber capacity (Liter)	50
Sterilization Temp (° C)	121 and 134
Control system	Microprocessor
Dry time	0/ 15 / 30 / 35 / 40 minutes
Life time	7 years



SA-300VMA





SA-300VLA is designed for Lab and Research Centers. The most important feature is a temperature Sensor for more precise liquid temperature control. It also has piped water supply and auto water fill.  
SA-300VL is suitable for Lab and Research Centers. It is upright systems and contains enough vertical space for two baskets.

# SA-300VLA/SA-300VL

## SA-300VLA

### Features:

- Digital temperature control
- Graduated sterilization timer
- Liquid temperature sensor for more precise liquid temperature control
- Auto water fill (piped-in)
- Pressure auto door lock

Model	SA-300VLA
Chamber capacity (Liter)	50
Sterilization Temp (° C)	105 - 136
Control system	Digital temp PID control
Sterilization Time	0 - 60 minutes
Life time	7 years



Liquid temperature sensor for more precise liquid temperature control



SA-300VLA

## SA-300VL

### Features:

- Digital temperature control
- Pressure Overload Protection
- Overheat Protection
- Door Safety Mechanisms

Model	SA-300VL
Chamber capacity (Liter)	50
Sterilization Temp (° C)	105 - 136
Control system	Digital temp PID control
Sterilization Time	0 - 60 minutes
Life time	7 years



SA-300VL

SA-300VFA is engineered with Microprocessor Technology, providing advanced features for more sophisticated chamber sensors, user interfaces and warning, alert systems.  
SA-300VF is designed with traditional mechanical engineering for customers who are accustomed to and prefer straightforward autoclaves with time-tested quality and durability that is both economical and practical. It has a rotating door lever that laterally slides away for safety.

# SA-300VFA/SA-300VF

## Super Falcon Series SA-300VFA

### Features:

- Program selector
- Pressure overload protection
- Overheat protection
- Pressure auto door lock
- Emergency/reset buttons
- Liquid sterilization program
- Auto water fill (piped-in)

Model	SA-300VFA
Chamber capacity (Liter)	50
Sterilization Temp (° C)	121 and 134
Control system	Microprocessor
Dry time	30 minutes
Life time	7 years



SA-300VFA

## Falcon Series SA-300VF

### Features:

- Graduated sterilization timer
- Mechanical pressure control system
- Pressure overload protection
- Overheat protection
- Emergency button

Model	SA-300VF
Chamber capacity (Liter)	50
Sterilization Temp (° C)	118 - 134
Control system	Mechanical engineering
Sterilization Time	0 - 60 minutes
Dry time	0 - 60 minutes
Life time	7 years
Options	Liquid



SA-300VF

The Floor Stand type are large sized autoclaves built for Hospitals and Medical Centers, with their flexible options and accessories provide plenty of diversity to allow you to mix and match to find the perfect fit for your organization.

HP Series are capable of wrapped, solid, liquid and vacuum based tubal or hollow instrument sterilization. The control panel includes a printer and a USB flash drive port for recording sterilization data. HP Series uses a convenient Touch Screen to manage almost all sterilization setup and configurations.

# HP Series

**Features:**

- Touch screen
- Fractioned pre vacuum air removal
- User Login / Password security
- Jacket warm-up function
- Bowie Dick, Leakage, Helix Test diagnostics
- Overheat protection
- Pressure overload protection
- Pressure auto door lock
- Emergency stop button
- Independent steam generator
- Customization program
- Digital printer and USB port



A. Touch screen

Sterilization Temp (° C)	121 and 134 or Graduated 105 - 135
Control system	Digital temp. PLC control
Sterilization Time	0 - 60 minutes
Dry time	0 - 60 minutes
Life time	7 years



Square chamber option



**HP Series**  
**EN285**  
 (for SAT-450HP, SAT-450HPD, SAT-500HP, SAT-500HPD)



SAT are digital temperature control autoclaves with pre & dry vacuum. Designed for Hospital medical, laboratory, biological science, pharmacy industry, reliability testing equipment.  
 SAP are automatic pressure control autoclaves. Its advantage lies in its product line diversity and flexible options to make the right match and perfect fit for your organization.

# SAT Series/SAP Series

## SAT Series

### Features:

- Fractionated pre vacuum air removal
- Independent steam generator
- Built-in temperature recorder
- Cycle progress indicator light
- Double locking safety system
- Special liquid program
- Stand by function
- Emergency stop button

Sterilization Temp (° C)	105 - 136
Control system	Digital temp. PLC control
Sterilization Time	0 - 60 minutes
Dry time	0 - 60 minutes
Life time	7 years



B. 6 -point temp. recorder (optional)

## SAP Series

### Features:

- Independent steam generator
- Cycle progress indicator light
- Easily accessible emergency stop button
- Special liquid program
- Emergency stop button

Sterilization Temp (° C)	118 - 134
Control system	Mechanical pressure control
Sterilization Time	0 - 60 minutes
Dry time	0 - 60 minutes
Life time	7 years



SAT Series



SAP Series

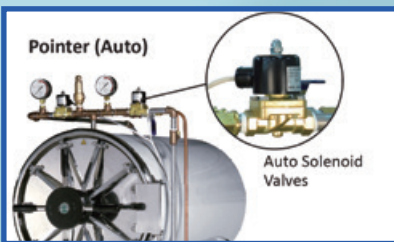
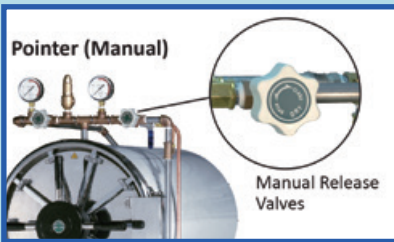
Pointer series are pressure control autoclaves, has two versions; the "Manual" version (SA), which requires manual intervention during a session; and the "Auto" Pointer version (SA-A), which is fully automated once a session is started.

# Pointer SA/SA-A

**Features:**

- Independent steam generator
- Wide range of usage
- Low water indication(Optional)
- Stainless steel Chamber, Jacket, Door, Supporter and Steam generator
- Double wall chamber design
- Pre-heating program

Model	SA	SA-A
Sterilization pressure (bar)	1.4	0.9-2.1
Control system	Mechanical pressure control	
Sterilization Time	0 - 60 minutes	
Dry time	0 - 60 minutes	
Life time	7 years	



### Floor Stand Feature Comparison

Specification \ Model	HP	SAT	SAP	Pointer-Auto	Pointer-Manual
<b>Control System</b>	Digital Temp. PLC Control	Digital Temp. PLC Control	Mechanical Pressure Control Optional: (T) for Digital Temp. Control	Mechanical Pressure Control	Mechanical Pressure Control
<b>Program for selection Wrapped/Unwrapped/ Liquid</b>	Yes	Yes	Yes	N/A	N/A
<b>Air Removal</b>	Vacuum Pump	Vacuum Pump	Gravity	Gravity	Gravity
<b>Pre-Vacuum Function</b>	Yes	Yes	N/A	N/A	N/A
<b>Post(Dry)-Vacuum Function</b>	Yes	Yes	Optional (V)	Optional (V)	N/A
<b>Dry function</b>	Yes (Auto)	Yes (Auto)	Yes (Auto)	Yes (Auto)	Yes (Manual)
<b>Printer &amp; USB storage</b>	Yes	N/A	N/A	N/A	N/A
<b>1-point temp. recorder</b>	N/A	Yes	Optional (X)	N/A	N/A
<b>6-point temp. recorder</b>	N/A	Optional (Y)	Optional (Y)	N/A	N/A
<b>Double Door</b>	Optional (D)	Optional (D)	Optional (D)	N/A	N/A
<b>Fill water system* (Water pressure 2 bar required)</b>	Auto	Auto	Auto	Manual Optional (B) for auto	Manual
<b>Chamber/Jacket Pressure display</b>	Gauge / LCD Display	Gauge	Gauge	Gauge	Gauge
<b>Stand-by Switch</b>	Yes	Yes	N/A	N/A	N/A
<b>Emergency/ Reset Switch</b>	Yes	Yes	Yes	N/A	N/A
<b>Add-Water Pump</b>	Optional (W)	Optional (W)	Optional (W)	Optional (BW)	N/A
<b>Water level Protection</b>	Yes	Yes	Yes	Yes	Optional (L)
<b>Pressure door auto-lock</b>	Yes	Yes	Optional (K)	Optional (K)	Optional (K)
<b>Life Time</b>	7 Year	7 Year	7 Year	7 Year	7 Year

Option Codes (e.g. Optional (V)) listed in the table above are only reference codes used by other documentation

B: AUTO-ADD WATER PLUMBING (WATER PRESSURE OF 2 BARS REQUIRED)

D: DOUBLE DOOR DEVICE

K: PRESSURE DOOR AUTO-LOCK DEVICE

L: WATER LEVEL CONTROLLER (LOW WATER INDICATOR)

T: DIGITAL DISPLAYED TEMP. CONTROLLER

V: DRY VACUUM PUMP

W: ADD WATER PUMP

X: 1-POINT TEMP. RECORDER

Y: 6-POINT TEMP. RECORDER





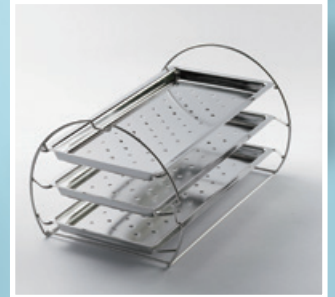
**Double Baskets**  
n/a for smaller upright models



**Single Basket**  
16/50L



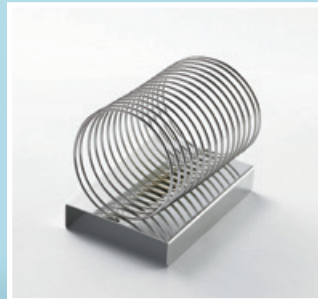
**Water Bottle, Silicone Tube, Clips**  
Stainless Steel Tube also available



**Tray Set**  
10/16/24/40L



**Box**  
10/16/24/40L



**Pouch Holder**  
97(w) x 122 (h) x 148 (d)



**Basket**  
16/24/40L



**Tray Set(MB)**



**Basket**



**Plate Set**



**Optional Trolley**



**Filter**



**Cham-mate**



## Comparison Charts-Tabletop & Vertical

Model No.	Chamber Capacity (L)	Chamber Size Diam x Depth (mm)	Overall Dimensions W x H x D (mm)	Voltage	Current(A) Power(W)	Heater (W)	Dry Heater (W)
<b>Super Deluxe Series</b>							
SA-260MB	24	260 x 450	533 x 442 x 655	230V	12A / 2770W	1800W	870W
SA-300MB	40	300 x 570	620 x 489 x 766	230V	14A / 3226W	2300W	826W
SA-302MB	50	300 x 710	621 x 489 x 906	230V	14A / 3226W	2300W	826W
<b>Super Microm Series</b>							
SA-230MA	16	230 x 410	522 x 410 x 594	230V	9A / 2026W	1400W	526W
SA-260MA	24	260 x 450	533 x 442 x 655	230V	13A / 2770W	1800W	870W
SA-300MA	40	300 x 570	620 x 489 x 766	230V	14A / 3226W	2300W	826W
SA-300VMA	50	300 x 710	600 x 980 x 450	230V	14A / 3000W	2300W	600W
<b>SuperFalcon Series</b>							
SA-230FA	16	230 x 410	522 x 410 x 594	230V	9A / 1926W	1400W	526W
SA-260FA	24	260 x 450	533 x 442 x 655	230V	12A / 2670W	1800W	870W
SA-300VFA	50	300 x 710	600 x 980 x 450	230V	13A / 2900W	2300W	600W
<b>Falcon Series</b>							
SA-252F	24	260 x 450	540 x 450 x 630	230V	9A / 2063W	1800W	263W
SA-300H	40	300 x 570	600 x 470 x 740	230V	12A / 2735W	2300W	435W
SA-300VF	50	300 x 710	600 x 1090 x 450	230V	13A / 3100W	2300W	800W
<b>Poleax Plus Series</b>							
SA-232N	16	230 x 410	501 x 406 x 537	230V	7A / 1400W	1400W	
SA-252N	24	260 x 450	540 x 450 x 630	230V	9A / 1800W	1800W	
SA-300N	40	300 x 570	600 x 470 x 740	230V	12A / 2300W	2300W	
<b>Poleax Series</b>							
SA-230	16	230 x 410	335 x 430 x 510	230V	7A / 1400W	1400W	
SA-232	16	230 x 410	335 x 430 x 510	230V 110V	7A / 1400W 11A / 1200W	1400W 1200W	
SA-232X	16	230 x 410	501 x 406 x 537	230V 110V	7A / 1400W 11A / 1200W	1400W 1200W	
SA-232V	16	230 x 410	382 x 614 x 398	230V	5.3A / 1200W	1200W	
<b>Lab Series</b>							
SA-300VL	50	300 x 710	600 x 1090 x 450	230V	10A / 2300W	2300W	
SA-300VLA	50	300 x 710	600 x 980 x 450	230V	10A / 2300W	2300W	

Model No.	Net Weight (Kg)	Water Fill <sup>1</sup>	Type	Water Tank Capacity (cc)	Water Consumption per cycle (cc)
<b>Super Deluxe Series</b>					
SA-260MB	57	Tank/Piped	Tabletop	4200	1270
SA-300MB	87	Tank/Piped	Tabletop	4200 / 8400	700 / 1500
SA-302MB	92	Tank/Piped	Tabletop	4200 / 8400	700 / 1500
<b>Super Microm Series</b>					
SA-230MA	44	Tank	Tabletop	4200	200-450
SA-260MA	54	Tank	Tabletop	4200	280-350
SA-300MA	77	Tank	Tabletop	8400	350-700
SA-300VMA	84	Piped	Vertical	N/A	1000-1200
<b>SuperFalcon Series</b>					
SA-230FA	43	Tank	Tabletop	4200	200-350
SA-260FA	51	Tank	Tabletop	4200	200-350
SA-300VFA	81	Piped	Vertical	N/A	700-900
<b>Falcon Series</b>					
SA-252F	45	Tank-Man	Tabletop	4200	400-550
SA-300H	66	Tank-Man	Tabletop	8400	400-550
SA-300VF	72	Manual	Vertical	N/A	800-1000
<b>Poleax Plus Series</b>					
SA-232N	30	Tank-Man	Tabletop	4200	600-750
SA-252N	45	Tank-Man	Tabletop	4200	750-1000
SA-300N	66	Tank-Man	Tabletop	8400	1500-1750
<b>Poleax Series</b>					
SA-230	15.5	Manual	Tabletop	N/A	350-400
SA-232	15.5	Manual	Tabletop	N/A	350-400
SA-232X	30	Tank-Man	Tabletop	4200	300-450
SA-232V	23.5	Manual	Vertical	N/A	300-450
<b>Lab Series</b>					
SA-300VL	72	Manual	Vertical	N/A	900-1020
SA-300VLA	77	Piped	Vertical	N/A	900-1020

- "Tank" - Internal Water Tank with auto-chamber-fill, "Piped" - uses local water plumbing with auto-fill.

- "Manual" - must add water manually for each session.

- "Tank-Man" Contains Water Tank but still requires knob to be manually turned on/off to fill chamber.

- Chamber and Door material Stainless Steel #304 (#316 is optional) ; Heater main body material Stainless Steel #316.

- Frequency: 50/60Hz

- Standard Accessory for SA-260MB : tray set.

- Standard Accessories for SA-230/232/232X, SA-252F/300H, SA-232/252/300N, SA-230/260FA, SA-230/260/300MA: Heater Cover / Sterilization Box

Optional Accessories are Tray set / Pouch Rack

- Standard Accessorieis for SA-232V: Heater Cover / Sterilization Basket / Exhaust Hose

- Standard Accessorieis for SA-300V Series: Heater Cover / Sterilization Basket\*2 / Exhaust Hose / 2000cc Bottle / Clip

Comparison Charts Tabletop / Vertical

Model No.	Temperature ( °C) Options	Temperature Indicator	Pressure Indicator	Progress Indicator <sup>4</sup>	Power Indicator	Pressure Auto Lock	Door Closed Indicator	Low Water Indicator	Reset	Program Selector	Prion Preset
<b>Super Deluxe Series</b>											
SA-260MB	121 or 134 105-135	LCD	Gauge/LCD Display	S	S	S	S	S	S	S	S
SA-300MB	121 or 134 105-135	LCD	Gauge/LCD Display	S	S	S	S	S	S	S	S
SA-302MB	121 or 134 105-135	LCD	Gauge/LCD Display	S	S	S	S	S	S	S	S
<b>Super Microm Series</b>											
SA-230MA	121 or 134	LED	Gauge	S	S	S	S	S	S	S	S
SA-260MA	121 or 134	LED	Gauge	S	S	S	S	S	S	S	S
SA-300MA	121 or 134	LED	Gauge	S	S	S	S	S	S	S	S
SA-300VMA	121 or 134	LED	Gauge	S	S	S	S	S	S	S	S
<b>SuperFalcon Series</b>											
SA-230FA	121 or 134		Gauge	S	S	S	S	S	S	S	
SA-260FA	121 or 134		Gauge	S	S	S	S	S	S	S	
SA-300VFA	121 or 134		Gauge	S	S	S	S	S	S	S	
<b>Falcon Series</b>											
SA-252F	118 - 134	Gauge	Gauge <sup>1</sup>	S	S	S					
SA-300H	118 - 134	Gauge	Gauge <sup>1</sup>	S	S	S					
SA-300VF	118 - 134	Gauge	Gauge <sup>1</sup>	S	S						
<b>Poleax Plus Series</b>											
SA-232N	121 or 134	LCD	Gauge <sup>1</sup>	S	S	S	S			S	
SA-252N	121 or 134	LCD	Gauge <sup>1</sup>	S	S	S	S			S	
SA-300N	121 or 134	LCD	Gauge <sup>1</sup>	S	S	S	S			S	
<b>Poleax Series</b>											
SA-230	126	Gauge	Gauge <sup>1</sup>		S						
SA-232	126	Gauge	Gauge <sup>1</sup>	S	S					S	
SA-232X	118 - 134	Gauge	Gauge <sup>1</sup>	S	S	0				S	
SA-232V	118 - 134	Gauge	Gauge <sup>1</sup>	S	S					S	
<b>Lab Series</b>											
SA-300VL	105 - 136	LED	Gauge	S	S						
SA-300VLA	105 - 136	LED	Gauge	S	S	S					

S - Standard 0 - Optional  
 1 - Pressure & Temperature indicated on same gauge  
 4 - Progress bar or Progress lights  
 5 - Excessive Temperature / Pressure Alarm

Bowie Dick Test	Pump Test	Selectable Sterilization Timer	Error Indicator	Pre-Vacuum	Post Dry Vacuum	Dry Selection	Redry	Liquid	Liquid Temp Control and Sensor	Data Recorder
S	S	1-60 min	S	S	S	0-60min	S	0		S
S	S	1-60 min	S	S	S	0-60min	S	0		S
S	S	1-60 min	S	S	S	0-60min	S	0		S
S	S		S	S	S	0,15,30,35,40 min	S	0		0
S	S		S	S	S	0,15,30,35,40 min	S	0		0
S	S		S	S	S	0,15,30,35,40 min	S	0		0
S	S		S	S	S	0,15,30,35,40 min	0	S		0
			S <sup>5</sup>			30 min	S	0		0
			S <sup>5</sup>			30 min	S	0		0
			S <sup>5</sup>			30 min	0	S		0
		0-60 min	S <sup>5</sup>			0-60 min		0		
		0-60 min	S <sup>5</sup>			0-60 min		0		
		0-60 min	S <sup>5</sup>			0-60 min		0		
			S <sup>5</sup>							S
			S <sup>5</sup>							S
			S <sup>5</sup>							S
		0-60 min						S		
		18,33 min						S		
		4,15,30 min						S		
		4,15,30 min						S		
		0-60 min						S		
		0-60 min						S	S	



## Comparison Charts -Floor Stand

Model No.	Chamber Capacity (L)	Chamber Size (mm) Diam x Depth (cyl) W x H x Depth (sq)	Overall Dimensions W x H x D (mm)
SA-400	100	400 x 800	630 x 1520 x 1070
SA-450	143	450 x 900	650 x 1600 x 1350
SA-500	196	500 x 1000	650 x 1600 x 1350
SA-600	350	610 x 1200	800 x 1700 x 1475
SA-400A	100	400 x 800	630 x 1520 x 1070
SA-450A	143	450 x 900	650 x 1600 x 1350
SA-500A	196	500 x 1000	650 x 1600 x 1350
SA-600A	350	610 x 1200	800 x 1700 x 1475
SAP-400	100	400 x 800	800 x 1800 x 1150
SAP-450	143	450 x 900	800 x 1800 x 1250
SAP-500	196	500 x 1000	800 x 1800 x 1350
SAP-600	350	610 x 1200	900 x 1800 x 1550
SAP-S0110	110	410 x 410 x 660	950 x 1800 x 1350
SAP-S0260	260	510 x 510 x 1000	950 x 1800 x 1450
SAP-S0454	454	610 x 610 x 1220	1050 x 1800 x 1650
SAP-S0680	680	610 x 915 x 1220	1740 x 2060 x 1960
SAP-S0848	848	610 x 915 x 1520	1740 x 2060 x 2260
SAT-400	100	400 x 800	800 x 1800 x 1150
SAT-450	143	450 x 900	800 x 1800 x 1250
SAT-500	196	500 x 1000	830 x 1760 x 1340
SAT-600	350	610 x 1200	900 x 1800 x 1550
SAT-S0110	110	410 x 410 x 660	950 x 1800 x 1350
SAT-S0260	260	510 x 510 x 1000	950 x 1800 x 1550
SAT-S0454	454	610 x 610 x 1220	1450 x 1925 x 1800
SAT-S0680	680	610 x 915 x 1220	1740 x 2060 x 1960
SAT-S0848	848	610 x 915 x 1520	1740 x 2060 x 2260
SAT-400HP	100	400 x 800	800 x 1800 x 1150
SAT-450HP	143	450 x 900	800 x 1800 x 1250
SAT-500HP	196	500 x 1000	800 x 1800 x 1350
SAT-600HP	350	610 x 1200	900 x 1800 x 1550
SAT-S0110HP	110	410 x 410 x 660	950 x 1800 x 1350
SAT-S0260HP	260	510 x 510 x 1000	950 x 1800 x 1550
SAT-S0454HP	454	610 x 610 x 1220	1450 x 1925 x 1800
SAT-S0680HP	680	610 x 915 x 1220	1770 x 2090 x 1990
SAT-S0848HP	848	610 x 915 x 1520	1770 x 2090 x 2260

Floor Stand Feature	Temperature (°C) Options	Temperature Indicator	Pressure Option	Pressure Indicator	Progress Indicator <sup>4</sup>	Power Indicator	Pressure Auto Lock	Reset Button	Standby <sup>3</sup>	Program Selector
Pointer SA (manual)		Gauge	1.4 bar	Gauge <sup>2</sup>	S	S	0			
Pointer SA-A (auto)		Gauge	0.9-2.1 bar	Gauge <sup>2</sup>	S	S	0			
SAP		Gauge	0.9-2.1 bar	Gauge <sup>2</sup>	S	S	0	S		S
SAT	105 - 136	LED Display		Gauge <sup>2</sup>	S	S	S	S	S	S
HP	121 or 134 105 - 135	HMI		HMI & Gauge	S	S	S	S	S	S

1 - "Piped" - Uses local water plumbing with auto-fill  
"Manual" - Water must be added manually

"Manual\*" - Manual water fill with optional piping

2 - Includes both Jacket and Chamber pressure gauges  
3 - Standby allows the Big Autoclave to maintain jacket temperatures between sterilization sessions.

4 - Progress bar or Progress lights

S - Standard

0 - Optional

Voltage	Heater (W)	Water Fill <sup>1</sup>	Chamber Type
230V / 380V (Mono/Tri Phase)	7 KW	Manual	Cylindrical
230V / 380V (Mono/Tri Phase)	7 KW	Manual	Cylindrical
230V / 380V (Mono/Tri Phase)	9 KW	Manual	Cylindrical
230V / 380V (Mono/Tri Phase)	12 KW	Manual	Cylindrical
230V / 380V (Mono/Tri Phase)	7 KW	Manual*	Cylindrical
230V / 380V (Mono/Tri Phase)	7 KW	Manual*	Cylindrical
230V / 380V (Mono/Tri Phase)	9 KW	Manual*	Cylindrical
230V / 380V (Mono/Tri Phase)	12 KW	Manual*	Cylindrical
230V / 380V (Mono/Tri Phase)	7 KW	Piped	Cylindrical
230V / 380V (Mono/Tri Phase)	7 KW	Piped	Cylindrical
230V / 380V (Mono/Tri Phase)	9 KW	Piped	Cylindrical
230V / 380V (Mono/Tri Phase)	12 KW	Piped	Cylindrical
230V / 380V (Mono/Tri Phase)	9 KW	Piped	Square
230V / 380V (Mono/Tri Phase)	12 KW	Piped	Square
230V / 380V (Mono/Tri Phase)	15 KW x 2	Piped	Square
230V / 380V (Mono/Tri Phase)	15 KW x 2	Piped	Square
230V / 380V (Mono/Tri Phase)	16 KW x 2	Piped	Square
230V / 380V (Tri Phase)	7 KW	Piped	Cylindrical
230V / 380V (Tri Phase)	7 KW	Piped	Cylindrical
230V / 380V (Tri Phase)	9 KW	Piped	Cylindrical
230V / 380V (Tri Phase)	12 KW	Piped	Cylindrical
230V / 380V (Tri Phase)	9 KW	Piped	Square
230V / 380V (Tri Phase)	12 KW	Piped	Square
230V / 380V (Tri Phase)	15 KW x 2	Piped	Square
230V / 380V (Tri Phase)	15 KW x 2	Piped	Square
230V / 380V (Tri Phase)	16 KW x 2	Piped	Square
230V / 380V (Tri Phase)	7 KW	Piped	Cylindrical
230V / 380V (Tri Phase)	9 KW	Piped	Cylindrical
230V / 380V (Tri Phase)	9 KW	Piped	Cylindrical
230V / 380V (Tri Phase)	12 KW	Piped	Cylindrical
230V / 380V (Tri Phase)	9 KW	Piped	Square
230V / 380V (Tri Phase)	12 KW	Piped	Square
230V / 380V (Tri Phase)	15 KW x 2	Piped	Square
230V / 380V (Tri Phase)	15 KW x 2	Piped	Square
230V / 380V (Tri Phase)	16 KW x 2	Piped	Square

Selectable Sterilization Timer	Pre-Vacuum	Post Dry Vacuum	Selectable Dry Timer	Liquid	Digital Printer	6-Point Temp Sensor Recorder	1-Point Temp Sensor Recorder	Water Pump
0-60 min			0-60 min	0				
0-60 min		0	0-60 min	0				0
0-60 min		0	0-60 min	S		0	0	0
0-60 min	S	S	0-60 min	S		0	S	0
0-60 min	S	S	0-60 min	S	S	N/A	N/A	0

**Other Notes:**

- Standard Chamber / Jacket / Door / Housing are made of Stainless Steel #304. #316 Stainless steel optionally available for Chamber / Jacket / Door. Heater material is Stainless Steel #316.
- Standard Accessories: Tray\*1, Glass Viewer Tube \* 2
- Optional Accessories: Trolley / Plate Set / Basket

- (cyl): Cylinder Chamber
- (sq): Square Chamber
- Manual Pointer: SA-400 / SA-450 / SA-500 / SA-600
- Auto Pointer: SA-400A / SA-450A / SA-500A / SA-600A
- Sturdy also offers customized sizes up to 2000 L

**STURDY**  
APEX GROUP

**STURDY INDUSTRIAL CO., LTD.**

168, Sec. 1, Zhongxing Road, Wugu District,  
New Taipei City 24872, Taiwan

Tel: 886-2-2981-5245

Fax: 886-2-2984-8208(Office)

Email: [foreign@sturdy.com.tw](mailto:foreign@sturdy.com.tw)

[www.sturdy.com.tw](http://www.sturdy.com.tw)



CE 0434 CE 0496

